

# SLAM200

The third generation handheld laser scanner



SLAM200 is the third generation high-precision handheld laser scanner developed by Feima Robotics. The device features a panoramic camera, a higher-performance laser sensor, a built-in GNSS module and a more powerful processing unit, offering higher precision, finer details, and more convenient functions. The superior functions of the previous two generation products have been integrated into SLAM200 to create a more efficient and convenient measurement tool.

## Main body

Weight	1.4 kg ( Host ) 1.9 kg ( With battery handle, base )
Dimensions	403.6 mm × 137.8 mm × 170 mm
Internal data storage	512 GB SSD
Working temperature	-20 °C ~ 50 °C
Humidity	< 95 %
Protection class	IP 54
Communication	Type-c \ Bluetooth \ Wi-Fi
Lithium battery handle	SP30
Lithium battery weight	400 g
Lithium battery endurance	Approx. 70 mins ( Only SLAM200 )

## Camera

Number of cameras	2
Effective pixels	12 MP ( per camera )
Resolution	4000 ( H ) × 3000 ( V ) ( per camera )
FOV	210° ( per camera )
Frame rate	30 Hz

## Result accuracy

Point cloud thickness	0.5 cm ( After optimization )
Relative accuracy	< 1 cm @ 50 m < 2 cm @ 100 m
Absolutely accuracy	< 5 cm

## GNSS module

Satellite system	GPS \ GLONASS \ Galileo \ BDS \ QZSS
Positioning Accuracy(RTK)	Horizon 0.8 cm + 1 ppm Vertical 1.5 cm + 1 ppm

## Laser

Laser class	Class 1
Range	0.5m ~ 300 m
FOV	360° ( H ) , 270° ( V )
Laser pulse repetition rate	640 kpts/s
Echoes	Triple Return
Rotating rate	10 Hz ( typical )

## Features

### High precision, high density, high fineness

SLAM uses a high-performance laser sensor with kpts/s laser pulse repetition rate and smaller laser spot. Combined with expert-level SLAM algorithm, it can achieve high-precision, high-density and high-fineness point clouds.

### Longer measurement range

A longer measurement range allows SLAM to take into account both ground mobile measurement and airborne data acquisition.

### Panoramic camera

Dual MP fisheye cameras can generate panoramas, color point clouds, and for visual SLAM mapping.

### Built-in GNSS module

It has a built-in GNSS module and can connect to the CORS system via a mobile phone, providing absolute position of the data. (External GNSS antenna required)

### Real-time mapping

Real-time SLAM can fullfit real-time mapping, real-time coloring, real-time orientation by RTK data.

### Multi-platform mounting

SLAM supports multi-platform operations, including handheld, sackpack, dronetome, and vehidetome.

## Software

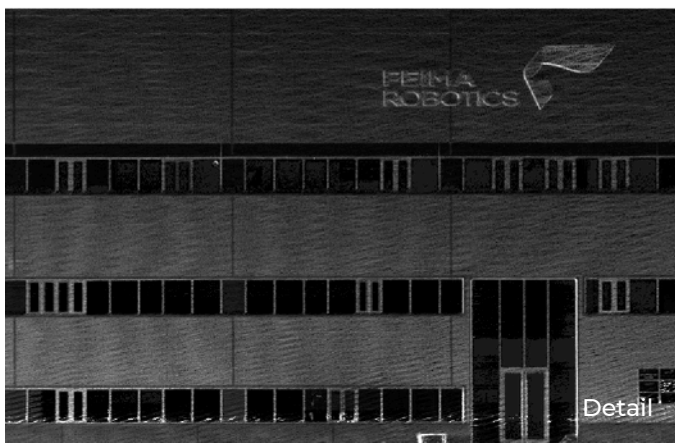
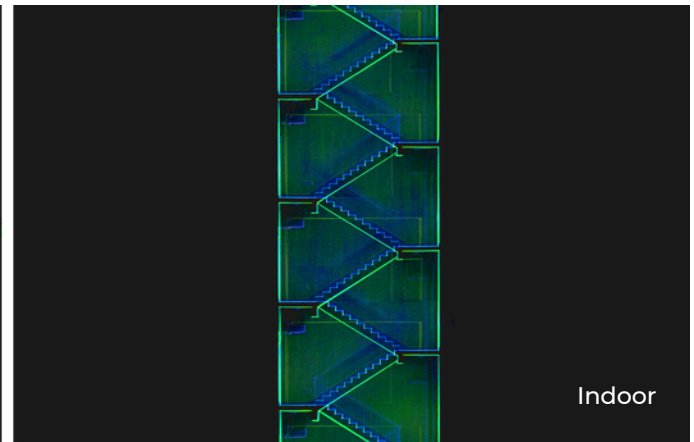
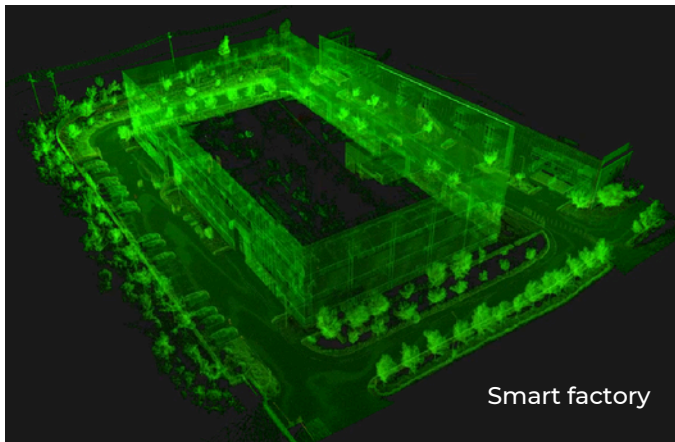
### SLAM GO POST Pro

SLAM GO POST, embedded in the UAV Manager professional edition, is a PC software that is compatible with SALM. the software can perform post-processing of collected data, generate high-precision and high-definition color point clouds, produce partial panoramic images, display point cloud andperform optimization processing.

### SLAM GO

SLAM GO is a mobile application developed in conjunction with SLAM. the APP can be connected to SLAM through a cell phone, and can perform project management, real-time point cloud display, image preview, firmware upgrade and other operations. The APP is synchronously adapted to Android and iOS operating systems.

## Applications



**Sankon Technologies India Pvt.Ltd.**

D-91, Sector-6,Noida-201301, Uttar Pradesh

Mob: 9971615537/9910739627 | Tel:0120-4104677/4711 Email: sales@sankon.in